

67 Speedos and Gauges



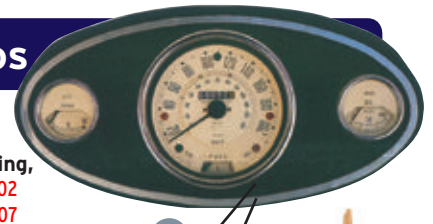
Speedo Cables

- Speedo cables with grey plastic ends were fitted to all Clubman body shape Minis and also 1980-88 Minis with Smiths twin type clock, positioned in front of the driver. No.1 ends are interchangeable with No.4 and used on many of our cables.
 - Early cars and L/H/D where cable length is 33" or less. GSD102
 - Later cars where 48" cable was fitted or required pre 1990. GSD415
- Innocenti speedo 26" cable for Veglia or Jaegar clocks that have small union and nut. .L362120
- Speedo cable for cars that have the original Smiths center positioned clock with built in fuel gauge such as Minis pre 1979 and any vans. (Not Clubman).
 - Original cable with length of 26" GSD101MS
 - Longer cable with length of 30" as used when converting cars post 1990 to central speedo cowl assembly .0722-30
 - Cable with length of 36" when moving central speedo to a position in front of driver .0722-36
 - Mini Moke speedo cable and also used when moving central speedo to a new location. 39" long also used on old Austin, Morris 1100/1300 style vehicles .0722-39
 - 48" extra long cable for specials when required. .0722-48
 - Super long cable for some rear engine specials requiring 66" length. Also fits Austin Healey Sprites & MG Midgets .0722-66
- Cables with white plastic ends were introduced by Rover when they started fitting the Nippon Seiki range of speedos and gauges in 1988. The grey type are interchangeable and are commonly used when looking for different lengths.
 - R/H/D 42.5" long GSD487
 - L/H/D 29" long GSD488
 - Lower section of 2 part cable 1999 on GSD545
 - Upper part of 2 part cable R/H/D 1999 on GSD546
 - Upper part of 2 part cable L/H/D 1999 on GSD547

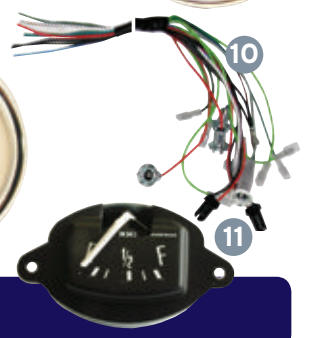
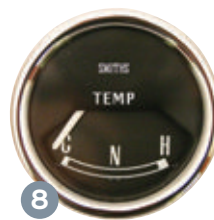
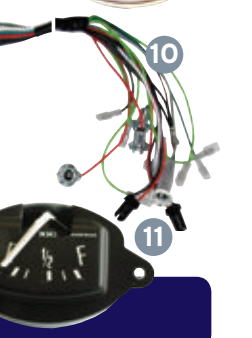


Smith's Speedos

- Original Cooper "S" speedo housing and parts.
- Black plastic fascia casing, bare .24A2702
 - Oval beading .14A9907
 - Clips for oval beading (qty 14 required). .14A9796
 - Black face 130mph speedo with fuel gauge and voltage stabiliser fitted for 3.4 final drive ratio .13H4442
 - Magnolia face .13H4442MG
 - Black face 200kph speedo with fuel gauge and voltage stabiliser fitted for 3.4 final drive ratio .13H4444
 - Magnolia face .13H4444MG
 - Black face - Temperature gauge, electrically operated with C.N.H reading .13H4460
 - Magnolia face .13H4460MG
 - Black face - Oil gauge, mechanical with 0-100 lb/sq.inch reading .13H4459
 - Magnolia face .13H4459MG
 - Central clock conversion harness PM05
 - Black face - Fuel gauge for central speedo from 1964 on when voltage stabiliser is fitted .13H2133
 - Magnolia face .13H2133MG



Note: Speedo calibration set for original 10" wheel Cooper 'S' transmissions



Smith's Gauges

0 - 80 x 100 electronic impulse tachometer (fits 80mm Pod No. 12)



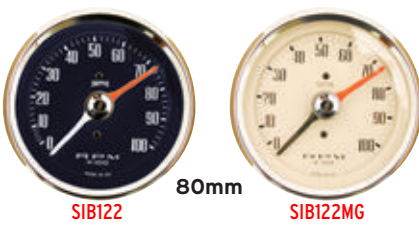
Ammeter with 60-60 Scale



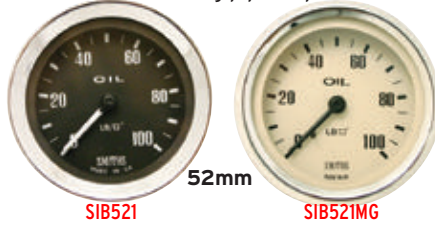
Oil temperature gauge mechanical fitting (racers fit to sump plug location using HPS8 union. P68 No.23)



0 - 100 x 100 electronic distributor/coil sensed tachometer (fits 80mm Pod No. 12)



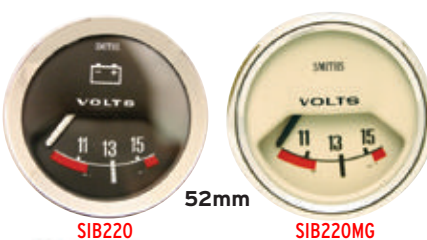
Oil pressure gauge 0 - 100lb/in" oil connecting pipe required



Water temperature 30 - 110° centigrade, with 6" 6" capillary mechanical fittings



Voltmeter



Electric clock



Dual oil pressure/water temperature gauge with capillary temp fittings (oil connecting pipe needed)

